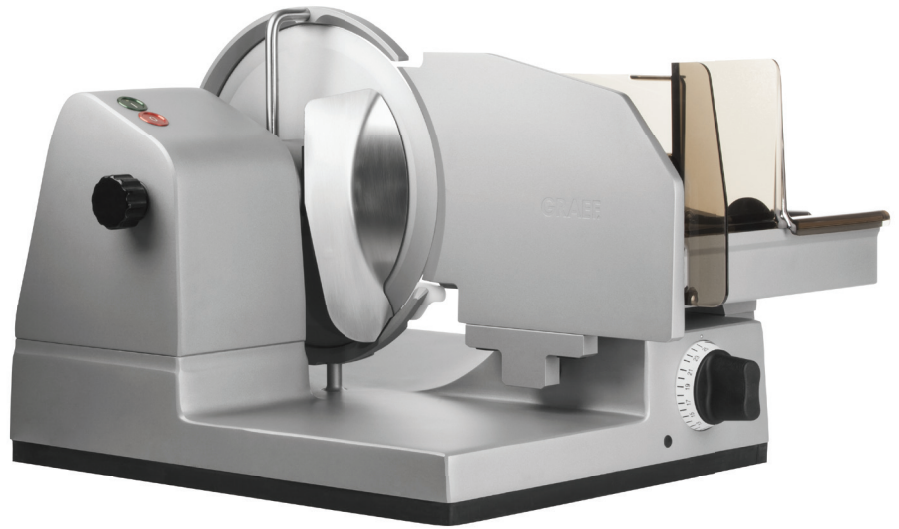
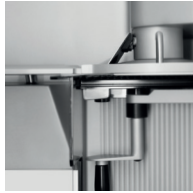
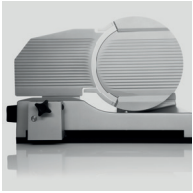


Master Line

Master 3020



FEATURES

- low method of construction
- compact and powerful
- precise guide tracks in stop, carriage and blade cover plate
- motor with double ball-bearing blade transmission
- cool surfaces with air cooling system
- a closed blade cover plate
- Piezzo switch technology indestructible and waterproof
- high-quality plastics unbreakable and chemical-resistant
- a closed rubber frame for a solid state
- relaxed work by optimal sliding properties - **Cera³**
- ergonomic operation of the end-piece holder with swiveling handle
- smooth running carriage - internal guide
- no adhere of the cutting material - **Cera³**
- plain and everywhere exposable surface
- free running blade
- carriage, blade cover plate and scraper are removeable
- special- high performance blade with narrow blade sheath - **Cera³**



TECHNICAL SPECIFICATIONS

Voltage	230 oder 400 V~
Motor power	500 Watt
Operating period	Continuous run
Emission noise level	< 69 dBA
Blade speed	200 RPM
Blade size	300 mm
Slicing thickness	0 - 24 mm
Slice size	260 x 195 mm
Carriage dimensions (LxW)	260 x 300 mm
Footprint (LxW)	540 x 440 mm
Outer dimensions (LxWxH)	600 x 570 x 420 mm
Weight	37,1 kg
Warranty	2 years

Accessories

2-step blade sharpener
Special oil

